



WORLD DISCOUNT TELECOMMUNICATIONS

Step-by-Step WDT Internet Connection Procedures for Microsoft Windows Vista

This guide presents step-by-step instructions on how to connect your Windows Vista computer to the Internet via the **WDT** dialup service.

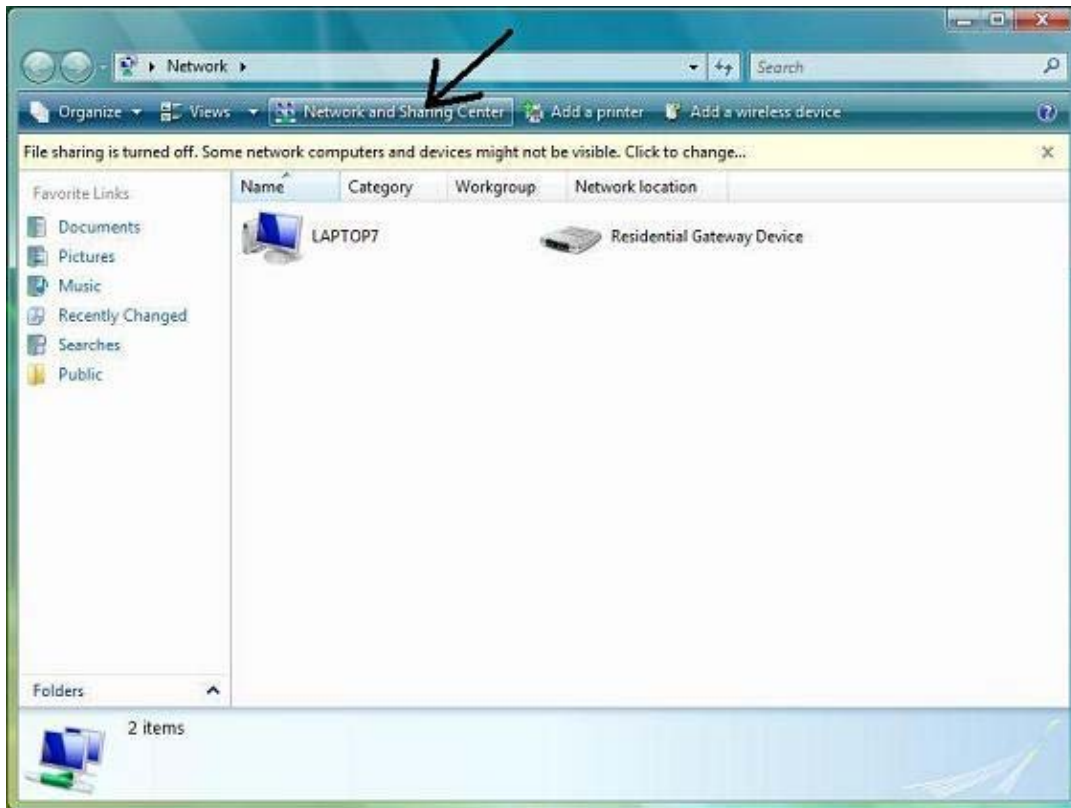
Step One:

Click on the **Start** Button and then click on the **Network** option



Step Two:

Select "Network and Sharing Center" from the top of the screen.



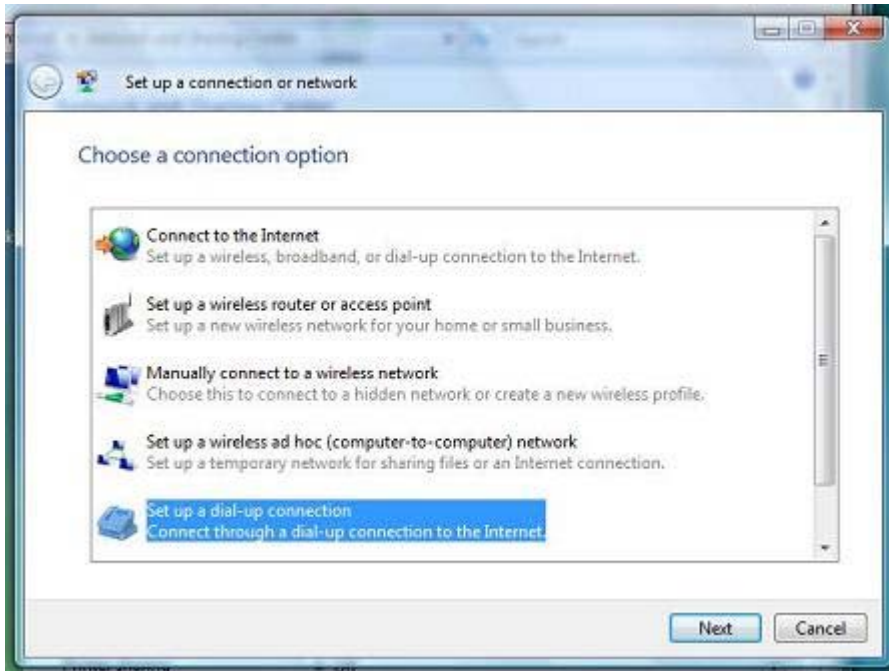
Step Three:

Next, Select "Set up a Connection or Network"



Step Four:

Select “Set up a dial-up connection” from the menu options.



Step Five:

Set up the dialup number with the area code included, as shown. Choose your User Name and Password. There is also an option at the bottom to select if multiple people will use this connection.

Then click **connect** and you are done!



Congratulations!

You have successfully completed WDT Internet connection setup for your Microsoft Vista computer!

Getting Connected:

If you just completed the WDT Internet connection setup, then the connection window is already open. Otherwise,

locate the MYWDT connection shortcut icon you created on your desktop, and double-click on it. The connection

window gives you options to change the dial-up access number and connection properties.

Click Dial to begin the connection process.

When the connection process is complete, Vista will display a status message. During the MYWDT

Internet connection, a Connection Status icon will be displayed in the bottom right-hand corner of your screen.

You may now use your Internet Explorer to browse the Web, Outlook Express to read your email, or other Internet applications.

Disconnecting from The Internet:

When you have finished with your Internet session and would like to disconnect from the WDT Internet, double click

on the Connection Status icon in the bottom right-hand corner of your screen (the area with small icons by

your clock). The icon looks like two computer screens right next to each other. Click the

Disconnect button. Your

computer is now disconnected. Click Close to close the Connection Status window.