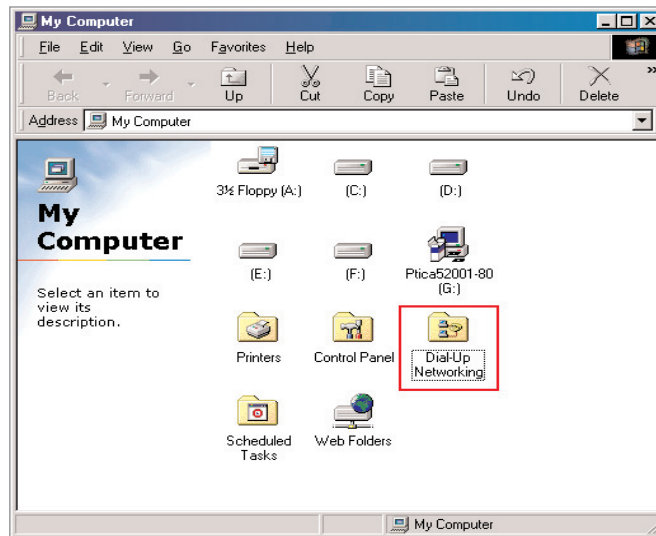


## Step-by-Step WDT Internet Connection Procedures for Microsoft Windows 95/98/Me

This guide presents step-by-step instructions on how to connect your Windows 95/98/Me computer to the Internet via the WDT dialup service.

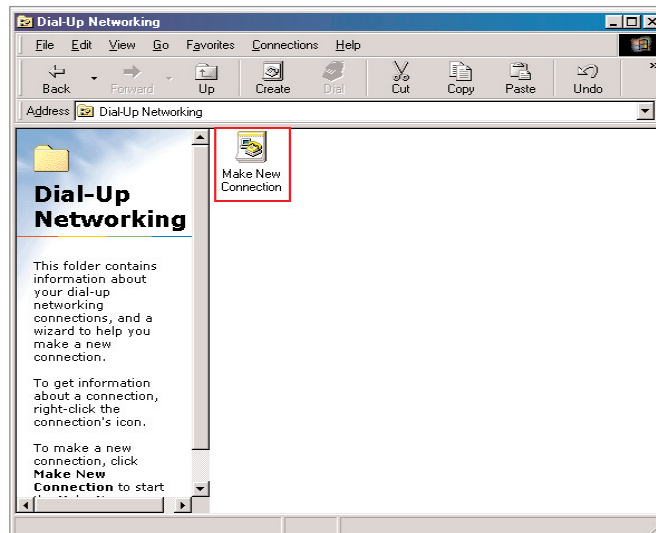
### Step One:

Start up your computer and make sure the telephone modem is connected to the phone line. When your computer has finished starting up, locate the **My Computer** icon on your desktop, and double-click on it. Then, double-click on the **Dial-Up Networking** icon. Your screen should look like the one below



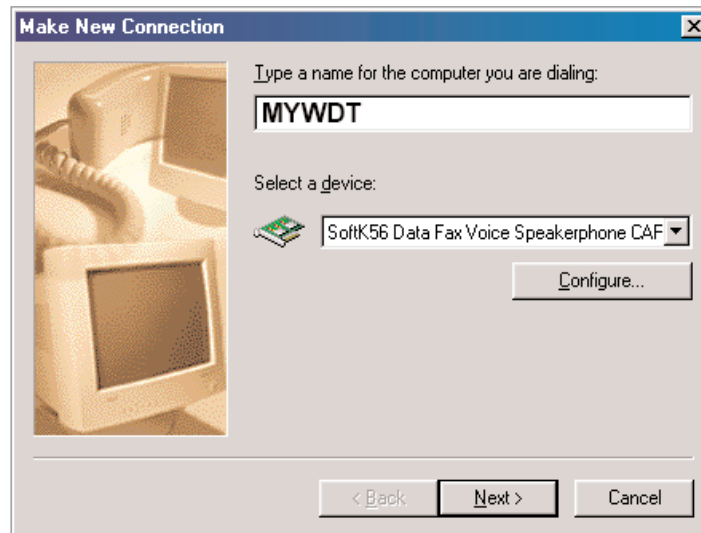
### Step Two:

Double-click on **Make New connection** under the Dial-Up Networking window.



### Step Three:

Windows 95/98/Me will open the Make New Connection window. Type in **MYWDT** into the Type a name for the computer you are dialing field. Click **Next** when finished.

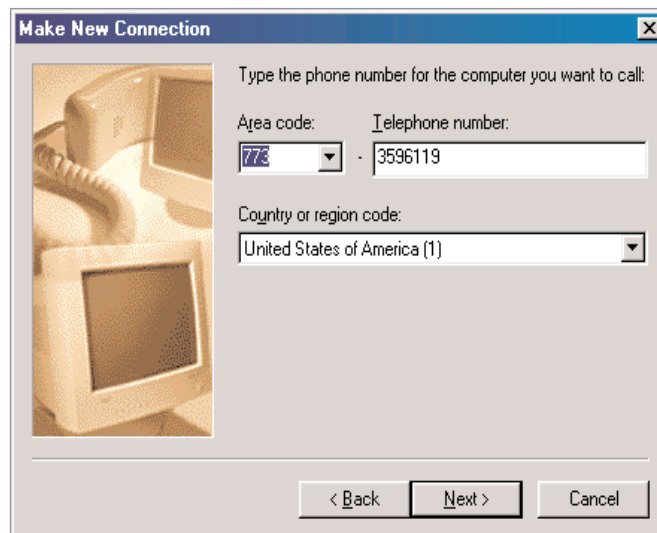


### Step Four:

Enter your local dial-up access number in the Area code and Telephone number fields. You can select a phone number that is a local call for you from the list of WDT access numbers included on the last page. Click **Next** when finished

#### Important Note:

You should contact your telephone company directly to make sure that the dial-up access number you have chosen is considered a local call before you begin to use it. You will be charged long-distance fees if you enter a number that is not a local call from where you are dialing. We cannot guarantee that any number on the list is considered as local by your telephone company.



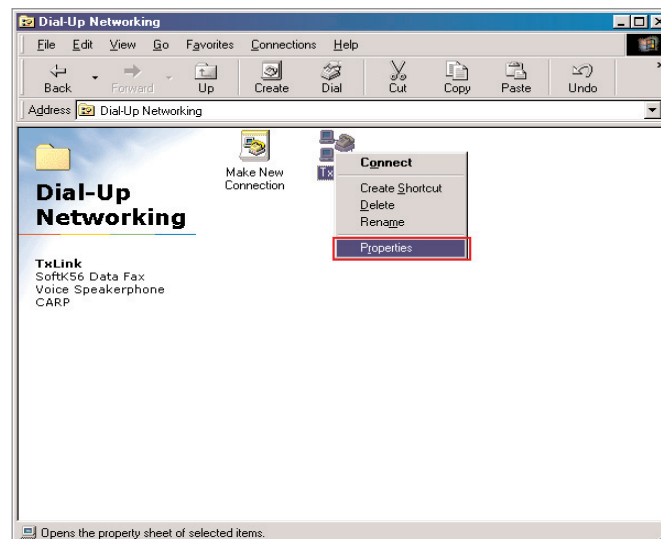
### Step Five:

On this screen, click **Finish**. Windows 95/98/Me will close the Make New Connection window.



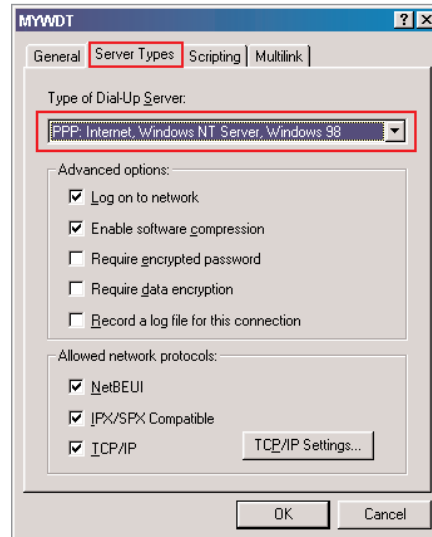
### Step Six:

Windows 95/98/Me will bring you back to the Dial-Up Networking window. It shows the **MYWDT** connection icon you have just created. **Right-click** on the MYWDT icon, and select **Properties**.



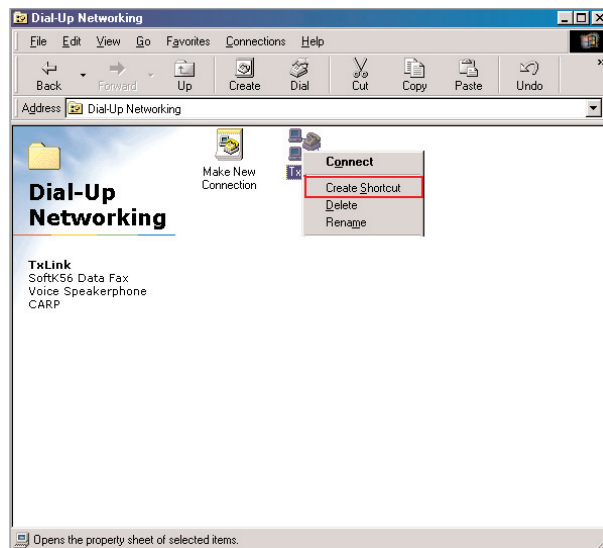
### Step Seven:

Click on the **Server Types** tab at the top. The **Enable Software Compression**, and **TCP/IP** boxes should be checked. Click **OK** when finished



### Step Eight:

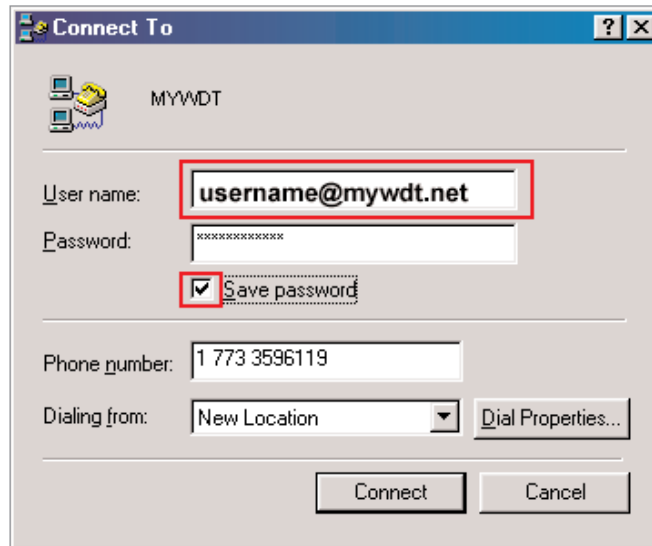
In this step you will create a shortcut to this connection on your desktop. **Right-click** on the **MYWDT** icon, and select **Create Shortcut**. When you are asked if you would like to place a shortcut on the desktop, select **Yes**.



## Step Nine:

Locate the MYWDT connection shortcut icon you created on your desktop, and double-click on it. In the User name field, enter your **full email address**, in lowercase letters. Your full email address consists of the account name that you were assigned when you opened an WDT account, followed by **@mywdt.net**, for example - **(username@mywdt.net)**.

In the **Password** field, enter your password that was selected when you opened an WDT account. Passwords are case sensitive. This means capital letters and small letters must be typed exactly as they have been given to you. Check the box marked **Save Password**. Click **Connect** to begin the connection process.

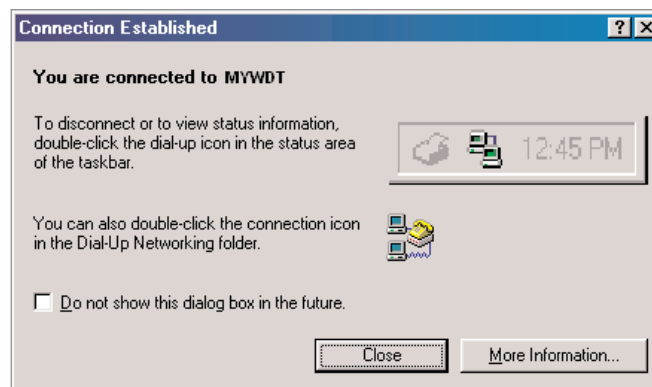


The screenshot shows a Windows 'Connect To' dialog box for a connection named 'MYWDT'. The 'User name' field is highlighted with a red box and contains the text 'username@mywdt.net'. The 'Password' field is masked with asterisks. The 'Save password' checkbox is checked and also highlighted with a red box. The 'Phone number' field contains '1 773 3596119' and the 'Dialing from' dropdown menu is set to 'New Location'. There are 'Connect' and 'Cancel' buttons at the bottom.

## Congratulations!

You have successfully completed WDT Internet connection setup for your Microsoft Windows 95/98/Me computer!

Windows will let you know that you're connected, and at this point, it's up to you what you do next. The box that'll show your status and that you're connected will look something like this:



The screenshot shows a 'Connection Established' dialog box. It contains the text 'You are connected to MYWDT'. Below this, it says 'To disconnect or to view status information, double-click the dial-up icon in the status area of the taskbar.' There is a small icon of a dial-up connection and a clock showing '12:45 PM'. Another line of text says 'You can also double-click the connection icon in the Dial-Up Networking folder.' At the bottom, there is a checkbox labeled 'Do not show this dialog box in the future.' and two buttons: 'Close' and 'More Information...'.

## ***Getting Connected***

If you just completed the WDT Internet connection setup, then the connection process is already started. Otherwise, locate the MYWDT connection shortcut icon you created on your desktop, and double-click on it. The connection window gives you options to change the dial-up access number and connection properties. Click Connect to begin the connection process.

When the connection process is complete, Windows 95/98 will display a Connection Established window. Click Close to close the Connection Established window. During the WDT Internet connection, a Connection Status icon will be displayed in the bottom right-hand corner of your screen.

You may now use your Internet Explorer to browse the Web, Outlook Express to read your email, or other Internet applications.

## ***Disconnecting from the Internet***

When you have finished with your Internet session and would like to disconnect from the WDT Internet, double-click on the Connection Status icon in the bottom right-hand corner of your screen (the area with small icons by your clock). The icon looks like two computer screens right next to each other. Click the Disconnect button. Your computer is now disconnected. Click Close to close the Connection Status window.